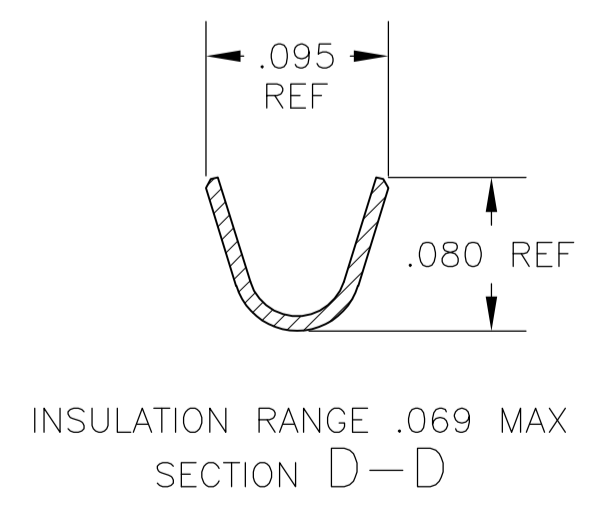
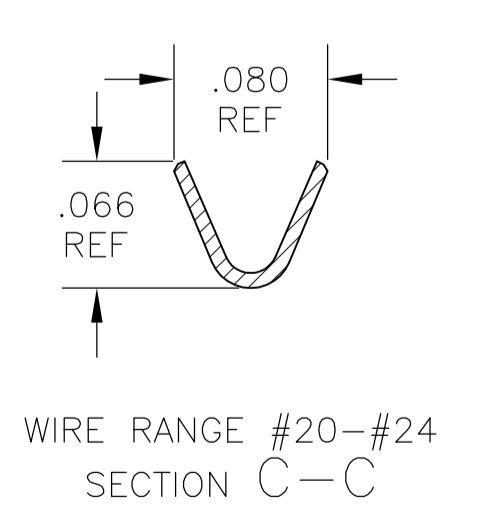
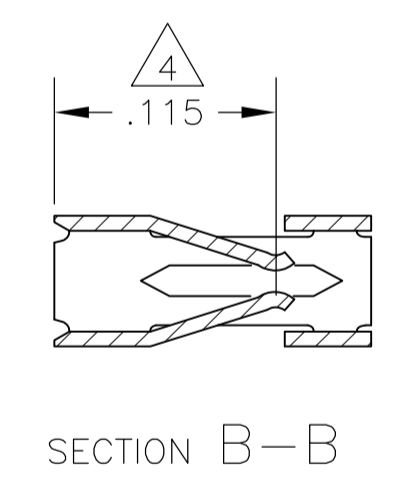
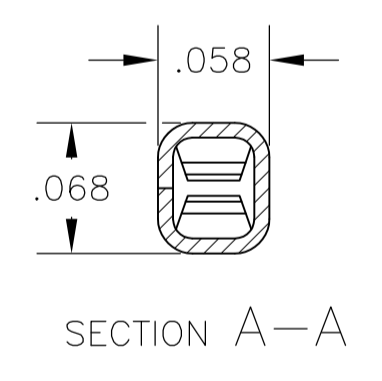
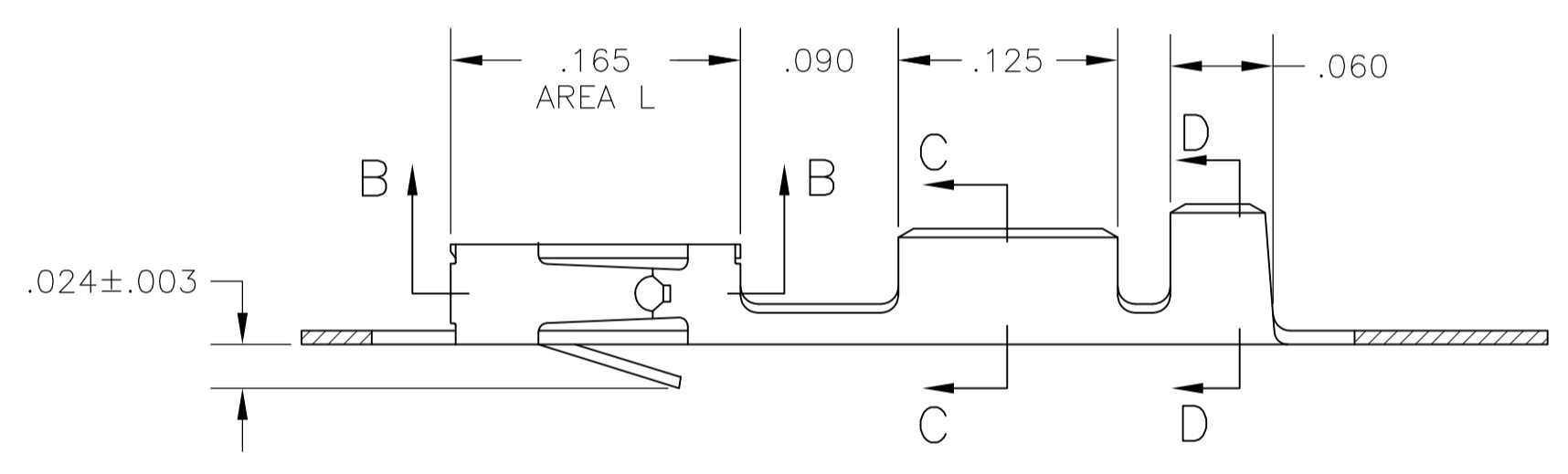


- 1 PLATING IS NOT REQUIRED IN THIS AREA.
- 2 CUT-OUTS ON BOX AT MANUFACTURER'S OPTION.
- 3 .006 MAX LOOSE PIECE CUT-OFF.
- 4 POINT OF MEASUREMENT FOR PLATING THICKNESS(INSIDE BEAMS).
- 5 .000015 GOLD IN CONTACT AREA, GOLD FLASH ON REMAINDER OF TERMINAL, ALL OVER .000050 NICKEL.
- 6 .000030 GOLD OVER .000050 NICKEL.
- 7 .000030 GOLD IN CONTACT AREA, GOLD FLASH ON REMAINDER OF TERMINAL, ALL OVER .000050 NICKEL.
- 8 PREPLATED: .000078-.000158 BRIGHT TIN.
- 9 .000030 GOLD IN CONTACT AREA, GOLD FLASH IN AREA L, ALL OVER .000050 NICKEL.
- 10 .000050 GOLD IN CONTACT AREA, GOLD FLASH ON REMAINDER OF TERMINAL, ALL OVER .000050 NICKEL.
- 11 SHEARED EDGES PERMITTED TO BE UNPLATED.
- 12 OBSOLETE PART NUMBER.
- 13 OBSOLETE PARTS: OBSOLETE CIS STREAMLINING PER D.RENAUD/D.SINISI.



OBSOLETE	12-6	1-	12-7	10	1-86492-8
	12-5	1-	12-4	9	1-86492-3
	87046-4		12-8	8	-9
			12-5	7	-6
			12-3	6	-4
	87046-1		12-1	5	86492-2
	LOOSE PIECE PART NUMBER		STANDARD APPLICATOR PART NUMBER	FINISH	MINI APPLICATOR PART NUMBER

THIS DRAWING IS A CONTROLLED DOCUMENT.		DIN L A MAYER 20MAY85		TE Connectivity	
DIMENSIONS: INCHES		CHK R J DAVIS 07JUN85			
TOLERANCES UNLESS OTHERWISE SPECIFIED:		APVD C LINDGREN 14JUN85		NAME CONTACT, MOD IV 1/2, RECEPTACLE, CRIMP SNAP-IN	
0 PLC ± -		APPLICATION SPEC		SIZE CAGE CODE DRAWING NO	
1 PLC ± -		WEIGHT		A1 00779 C=86492	
2 PLC ± -		CUSTOMER DRAWING		SCALE 10:1 SHEET 1 OF 1 REV	
3 PLC ± .005					
4 PLC ± -					
ANGLES ± -					
MATERIAL CU-NI-SI					